

# Present Module-Test Station in Bari

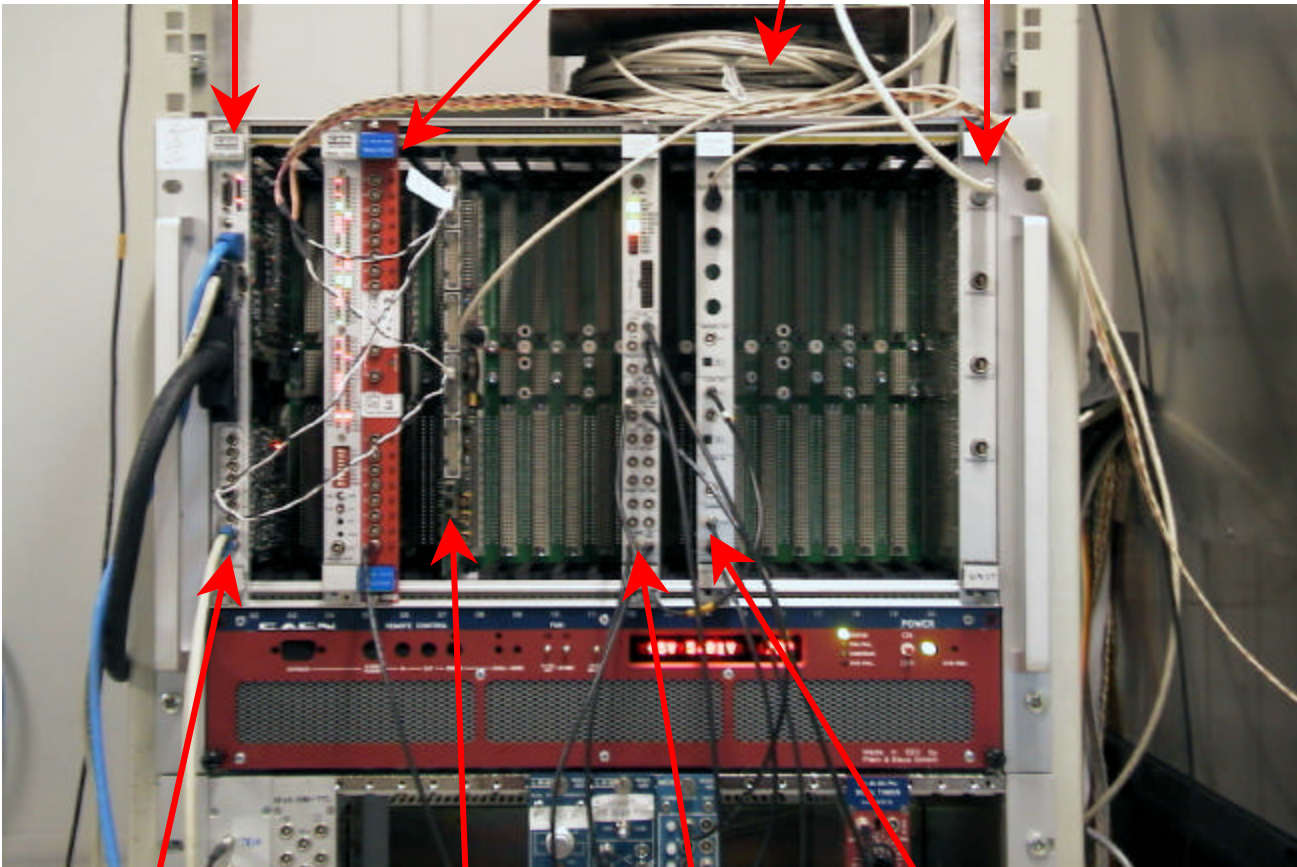
VME based

RTPC 8067LK  
based on IBM PowerPC

optical fiber

I2C

I/O unit



MK2  
FED PMC  
card

TTCrx  
+  
clock & trig  
buffer

TTCvi

TTCvx

## Planning:

Test Station "Lyon-System" based,  
VME integrated (if needed)

Equipment already ordered:

- **1 CCU**
- **1 FEC**
- **1 UTRI**
- **1 FED (Mk3)**
- **1 PCI – VME interface**  
(arrived but not installed)

Equipment to buy:

- **1 "Lyon station"**  
+ **1 for gantry tests (cost dependent)**
- **1 1060 nm laser system ~ 6200 USD**
- **1 infrared board from Pisa ~ 500 USD**
- **1 (or 2) VME – PMC interface ~ 1300 EURO**
- **climatic chamber (thermal cycle)**
- **more FEDs ?**